

Resort Catalog

2024 Edition

BaliSwim

Your Resort Line. Easy.
baliswim.com

We get you started, forecast trends, source, develop, produce and make manufacturing so much easier:

Starter Kits

How-to Guides

Fabrics & Prints

Hardware Eco-options

Pattern Making

Ready Design

Online Bulk & Sample Shop

Fits & Re-fits

Grading

Bulk Production

Quality Control

Packaging & Shipping

We cover it all

At Bali Swim we are dedicated to helping entrepreneurs succeed and strive to provide you with the tools, resources, strategies, and guidance that you need to create quality brands - just like our Starter Kits and this catalog!

We are here to modernize the swimwear manufacturing industry - and offer low minimum orders, an innovative online shop for sample and bulk orders, on-trend and customizable ready designs, eco options for almost everything that we offer, and a transparent and open factory door policy.

Every order with us supports grassroots organizations that advance women's education and the environment; and we have implemented business development and hiring practices that raise the standards for women, health and income in our industry.

We also work hard to bridge any gap by providing fast and responsive WhatsApp and live chat support, effortless scheduling for video calls, and team that are ready to guide you through every step.

At Bali Swim, we work to make entrepreneurship accessible, dependable, and fulfilling for you and our worldwide community.



Shop Resort

**Easiest & quickest way to create
your luxe brand.**

Millions of ready design options with your custom brand label.

[SHOP.BALISWIM.COM](https://shop.baliswim.com)

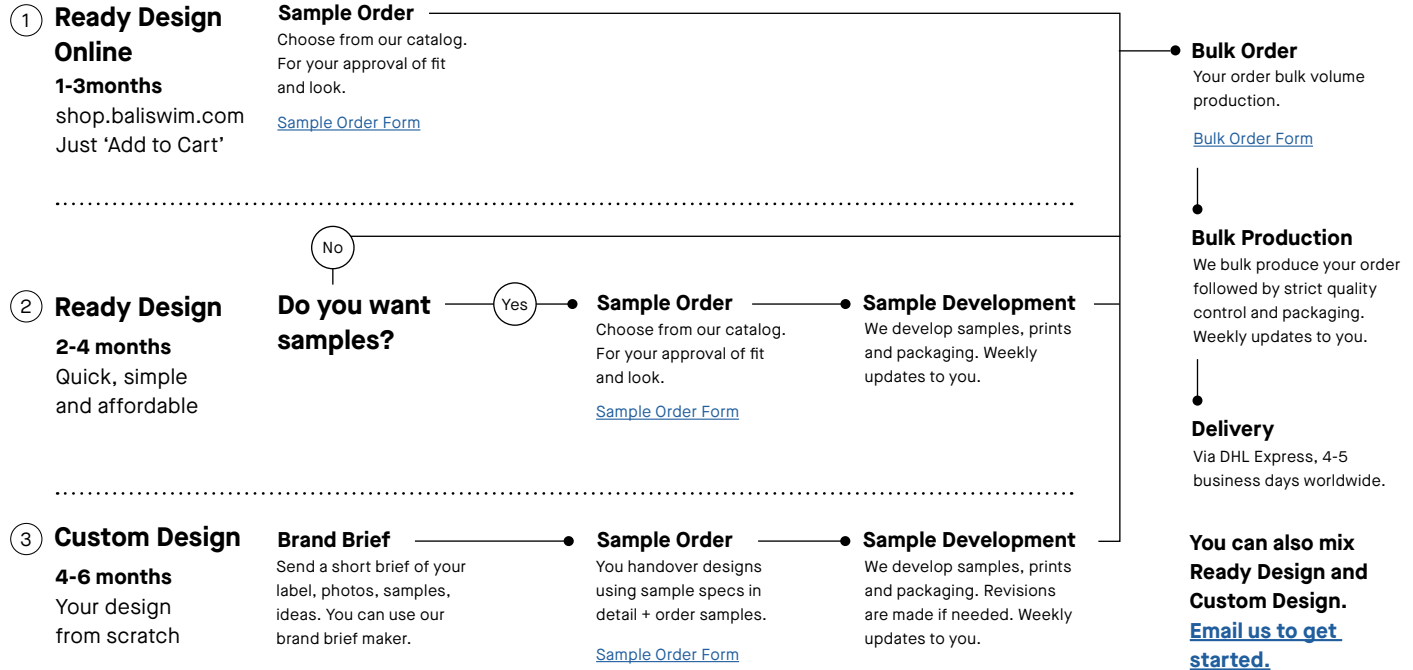
Step-by-step

Preparation

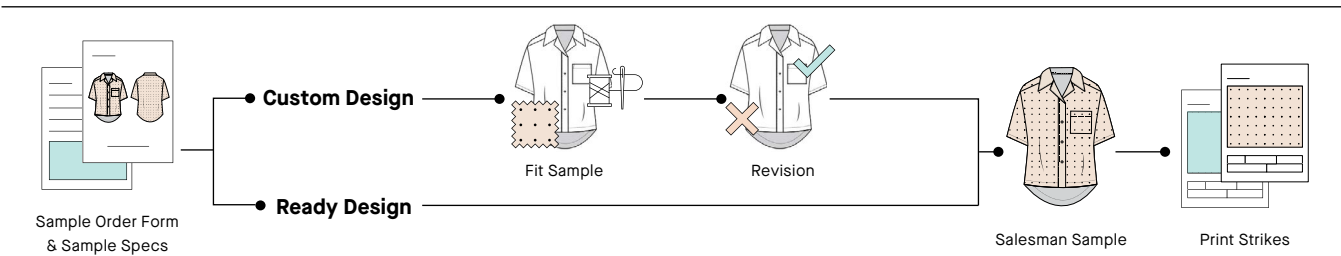
Sampling Stage
1-3 Months

Production Stage
2-3 Months

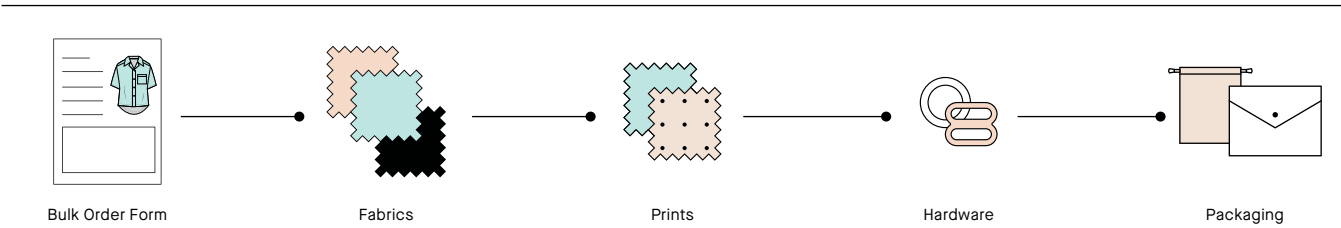
Delivery



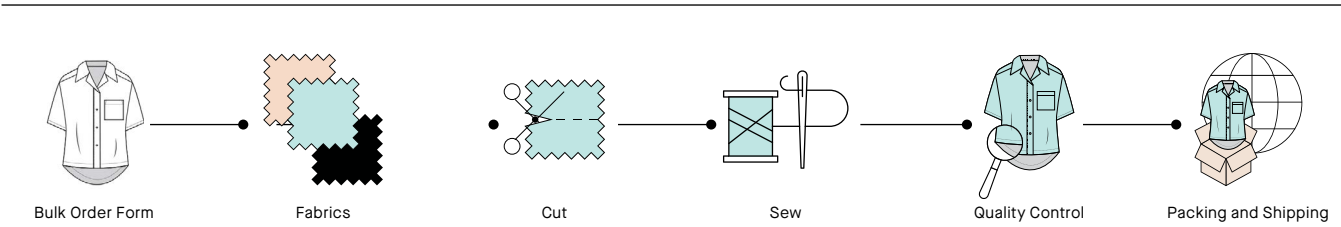
Sampling



Bulk Preparation



Bulk Production





Ready Design

Buy samples and bulk on
shop.baliswim.com now!

Ready Design is our ready-to-go collection of resort wear designs! Choose the pieces you like and adorn with your very own branding – and they're ready to sell! Each year, we conduct extensive research on what's women's apparel is in, what's out, and what is the upcoming trends are for the season ahead. From there, we create a collection of styles that include those on-trend styles and re-worked classics.

You can mix and match tops and bottoms between any styles. You could even combine them with your custom designs to flesh out your resort line. The Ready Design styles are available in selected fabrics in upcoming color trends and prints. There are no development costs (pattern making & grading) with ready design. You only pay per piece. This method offers you the quickest, simplest, and most affordable method to manufacture your own resort wear label.

Custom Design

Custom Design is where your ideas shine! For us to develop your dream resort wear or women's apparel we want to understand your ideas clearly. Ideally this means complete tech specs + patterns or samples of what you want to develop. But since we also work with non-designers we are definitely flexible. We have example templates (which we call sample specs) with clear instructions of how to start and what we need from you. This could include pictures of products you like with notes on any adjustments. We'll happily guide you.

Extra Notes Feel free to take design inspiration from our Ready Design range – taking parts from one design and adding to another or combining them with your own ideas.

Women’s Resort / Average Bulk Prices

CUSTOM DESIGN | +/- 50% | US\$

	Solid	Color	Print
Top	\$19 ⁹⁵	\$21 ²⁴	\$23 ⁶⁶
Bottom	\$23 ⁹⁵	\$23 ⁹⁵	\$30 ⁹⁵
Dress	\$26 ⁹⁵	\$27 ⁹⁵	\$34 ⁹⁵

Bulk Volume Price Chart

US\$ | *LESS INCUR SURCHARGES, MORE EARN DISCOUNTS. FLEXIBLE PRODUCTION AND GROWTH.

Design	Only Ready Design (RD)	All: Ready Design (RD), Custom Design (CD), or Mix			
Volume	<250	250-999	1000-2499	2500-4999	5000+
Surcharge/ Discount*	+\$600 on total order	\$0	-\$1 per piece	-\$2 per piece	Inquire

	Service	Price, US\$	Comments
Product Development	Custom Design Development Fee	\$99/design (50% credited to bulk)	We offer this service for you to develop your own custom designs from scratch, including pattern making and size range grading. 50% of the fee will be credited towards your bulk order for each the designs you develop. Any revision to your custom design is not included in this fee.
	Custom Design Sample Fee	3X Bulk Price	Make samples to develop your own design. The fee includes one sample we send to you, and one copy we keep with us, so you don't have to return your sample, saving you time and costs in development.
	Custom Design Additional Revision Fee	\$49/revision	If any revision is needed after the first development. Charged per every round of revision.
	Pre-Production Sample (PPS)	2X Bulk Price	Order with production, delivered early. Max 20PPS and 1 size per style/color/print. Additional sizes or 20+ counts as regular sample (3x).
	Ready Design Sample Fee	3X Bulk Price	No development cost, pay per pieces. Make samples to test colors, prints and hardware for Ready Design. Refer to Ready Design price lists.
Prints & Graphics	Print Strike(s) & Mock-up	\$25	Digital mock-up of print at different scales on bikini model + test print on fabric.
	Print Placement (Rare)	\$35/style/size	Only for prints with a set specific layout on product. Development cost to finalize pattern digitally and placing print according to spec.
	Logo Re-work (Optional)	\$35	If your logo is of low resolution, file corrupt, or need other adjustment or even re-creation. One-time charge.
	Packaging Development	\$10/design	Includes layout of logo/tagline/website on packaging option, mock-up for approval and actual sample.
	Other Graphic Work	\$25/hour	

MOQ Per Order

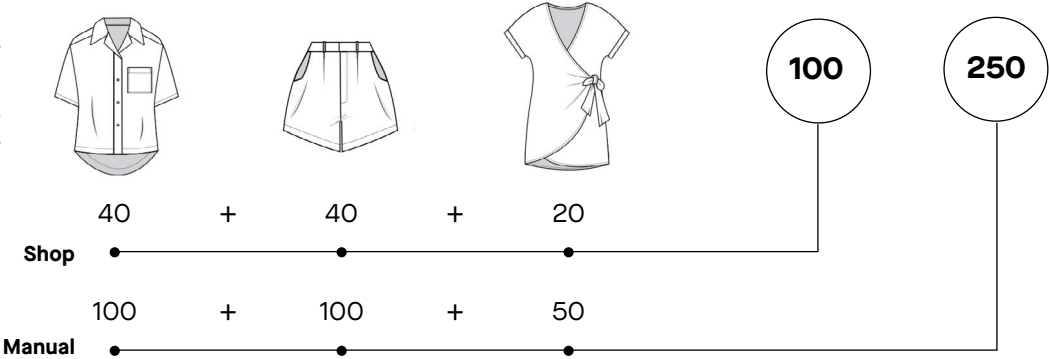
Samples
No MOQ.

Shop
MOQ 100 pcs/order.

Manual (Custom Design or Mix)
MOQ 250 pcs/order.

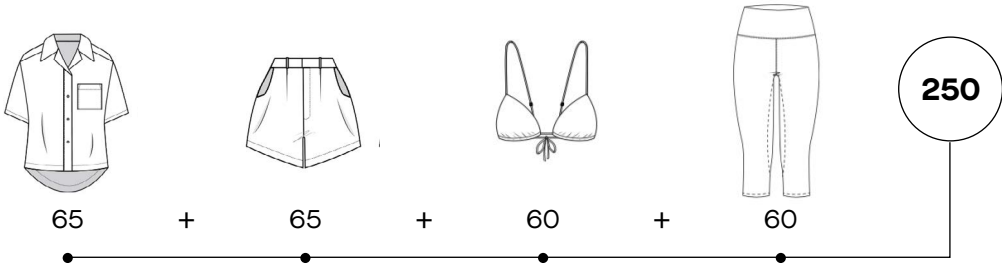
Example: You can order 40 tops,
40 bottoms, and 20 dresses
to reach our Shop Order MOQ.

You can order 100 tops, 100
bottoms, and 50 dresses
to reach our Manual Order MOQ.



You can mix women's
resort, women's swim,
women's plus size, and
women's active to reach
our MOQ. We count the
pcs together.

Example: You can order 65 resort
tops, 65 resort bottoms, 60 bikini
tops, and 60 yoga pants.



MOQ Per Style/Color/Print

Our MOQ per style and color/print is 20pcs.

Example: If you want a particular top in blue, sand and leopard print, you have to order at least 20 pcs of each.



Blue Tops



Sand Tops



Printed Tops

MOQ Per Size

Our MOQ per size 3 pcs.
You need to order minimum 3 of each size you want your bikini top in.

Example: If you want your blue top in a size range of XS-L, then you can order 3XS, 7S, 7M, and 3L. You can order more however you like, and use any size range you prefer, but for whatever size you choose, you need to order at least 3 pcs.



XS



S



M



L



Ready Design 2024

**You can buy samples
and bulk of it right now
at shop.baliswim.com!**

Mix and match tops and bottoms between any styles you wish. You could even combine our designs with your own to complete your resort line. Take the designs as they are (and add your choice of colors) and you'll have a development fee-free experience (pattern making & grading)!

You only pay for what you order (the full price list can be seen at the end of this catalog).

If you want other styles or to adjust the cuts of our styles in other ways, you can - but we'll treat it as a custom design and we need to re-develop the style from scratch. This would include development fees.

Adding or switching a small accessory detail is most likely acceptable without re-development. If you have a special request, just ask! We'll do what we can to help.

We will be releasing new designs yearly, both classics and on-trend.



How to read this catalog

- (A) Technical Drawings
- (B) Product Details

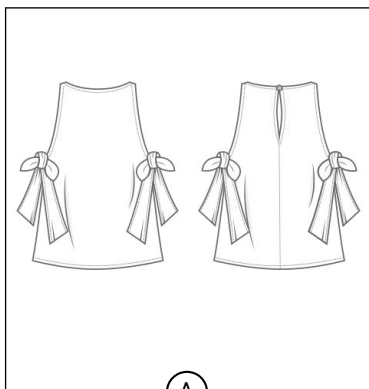
Front Image



Side Image



Back Image



(A)

TOP

BSWR-T10

Category: Tank top

Fabric: BS Bubble Cotton (On Photo)

Style Details:

- Self tie side strap
- Back button opening

Sleeve Length: Sleeveless

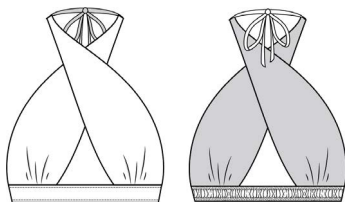
Stitching: Basic hem stitch, Binding stitch

Hardware: Closure (Button)

(B)

Tops





TOP

BSWR-T16

Category: Top

Fabric: BS Bamboo (On Photo)

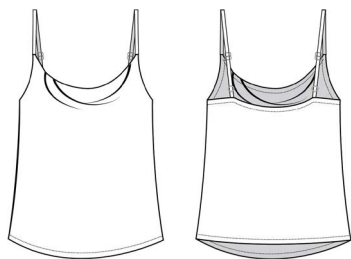
Style Details:

- Criss cross top
- Halter neck tie
- Elasticated back

Sleeve Length: -

Stitching: Basic hem stitch

Hardware: -



TOP

BSWR-T15

Category: Top

Fabric: BS Sateen Viscose (On Photo)

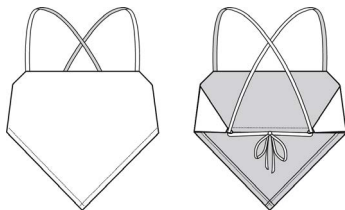
Style Details:

- Cowl neck
- Adjustable strap

Sleeve Length: -

Stitching: Basic hem stitch

Hardware: Adjustable strap (Ring, Slider)



TOP

BSWR-T12

Category: Top

Fabric: BS Linen 21 (On Photo)

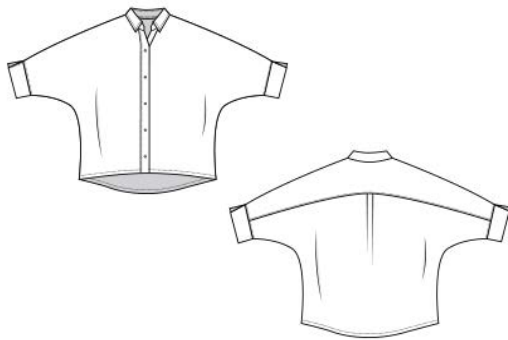
Style Details:

- Scarf style top
- Square neckline
- Adjustable shoulder straps
- Open back design with crossover back strap
- Handkerchief / style hem

Sleeve Length: -

Stitching: Basic hem stitch

Hardware: -



TOP

BSWR-T03

Category: Shirt

Fabric: BS Linen 21 (On Photo)

Style Details:

- Dolman sleeve
- Back shoulder yoke detail
- Shirt collar
- Cuff sleeve
- Sleeve hem slit

Sleeve Length: Three-Quarter

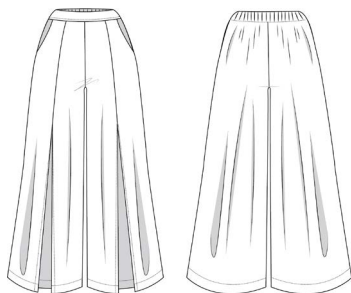
Stitching: Basic hem stitch

Hardware: Closure (Button)



Bottoms





BOTTOM

BSWR-B18

Category: Pants

Fabric: BS Bubble Cotton (On Photo)

Style Details:

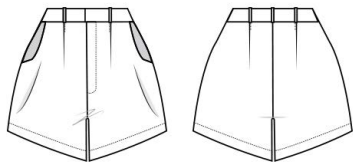
- Elasticated back waistband
- Side pocket
- Front slit
- Loose fit

Stitching: Basic hem stitch

Hardware: -

Inseam Length: Angkle

Length: -



BOTTOM

BSWR-B03

Category: Shorts

Fabric: BS Linen 14 (On Photo)

Style Details:

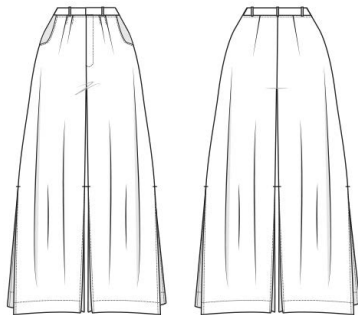
- Fixed waistband
- Side pocket
- Belt loop

Stitching: Basic hem stitch

Hardware: Closure (Front Zipper, Hook & Bar)

Inseam Length: Short

Length: -



BOTTOM

BSWR-B02

Category: Pants

Fabric: BS Organic Cotton (On Photo)

Style Details:

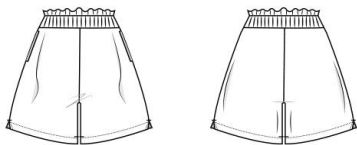
- Fixed waistband
- Side pocket
- Belt loop
- Side slit

Stitching: Basic hem stitch

Hardware: Closure (Front Zipper, Hook & Bar)

Inseam Length: Ankle length

Length: -



BOTTOM

BSWR-B01

Category: Shorts

Fabric: BS Organic Cotton (On Photo)

Style Details:

- Elastic paperbag waistband
- Side pocket
- Side slit

Stitching: Basic hem stitch

Hardware: -

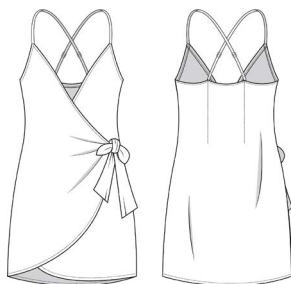
Inseam Length: Short

Length: -



Dresses





DRESS

BSWR-D14

Fabric: BS Sateen Viscose (On Photo)

Style Details:

- Wrap style
- Tulip hem
- Adjustable shoulder straps
- Criss cross back

Sleeve length: -

Stitching: Basic hem stitch

Hardware: Adjustable strap (Ring, Slider)

Length: Mini



DRESS

BSWR-D13

Fabric: BS Sateen Viscose (On Photo)

Style Details:

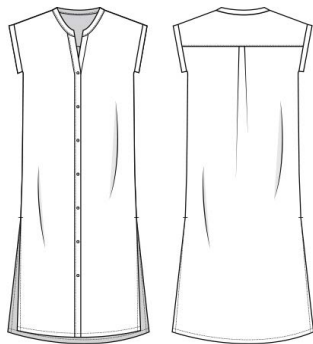
- Front cut out detail
- Adjustable spaghetti straps
- Back zipper opening

Sleeve length: -

Stitching: Basic hem stitch

Hardware: Opening (Invisible Zipper)
Adjustable strap (Ring, Slider)

Length: Maxi



DRESS

BSWR-D09

Fabric: BS Bubble Cotton (On Photo)

Style Details:

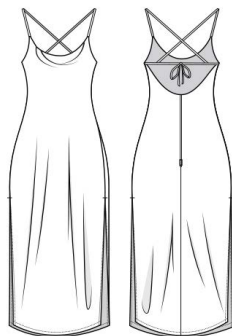
- Mandarin collar
- Dolman sleeve
- Side slit
- Front button opening

Sleeve length: Cap sleeve

Stitching: Basic hem stitch

Hardware: Closure (Button)

Length: Midi



DRESS

BSWR-D06

Fabric: BS Sateen Viscose (On Photo)

Style Details:

- Cowl neck
- Adjustable tie strap
- Side slit
- Strappy opening

Sleeve length: -

Stitching: Basic hem stitch

Hardware: Closure (Invisible Zipper)

Length: Midi



Standard Size Chart

WOMEN'S RESORT | 2024 VERSION



International Sizing	XS	S	M	L	XL
US	4	6	8	10	12
AU/UK Old	8	10	12	14	16
AU/UK New	6	8	10	12	14
Bust (cm)	83	87	91	95	99
Waist (cm)	65	69	73	77	81
Lower Hip (cm)	91	95	99	103	107
Inside Leg Length (cm)	72.5	73.5	74.5	76.5	76.5
Bust (in)	32.7	34.3	35.8	37.4	39
Waist (in)	25.6	27.2	28.7	30.3	31.9
Lower Hip (in)	35.8	37.4	39	40.6	42.1
Inside Leg Length (in)	28.5	28.9	29.3	29.7	30.1

Use a tape measure to measure, holding the tape securely around for key points.

- A Bust.** Measure over the fullest area of the bust & straight around the back.
- B Waist.** Measure waist under the rib cage and above the hip.
- C Lower Hip.** Measure the fullest part of the hip ensuring the tape is straight around the body.
- D Inside Leg Length.** Measure the inner thighs from below the crotch straight to the floor level.

Women's Resort Price List Ready Design

Code	Bali Swim Linen 21	Bali Swim Linen 17	Bali Swim Linen 14		Bali Swim Poly Linen	Bali Swim Organic Cotton	Bali Swim Sateen Viscose	Bali Swim Poly Sateen	Bali Swim Bamboo	Bali Swim Poly Rayon	Bali Swim Bubble Cotton		Bali Swim Linen Crinkle
	Solid	Color	Solid	Color	Print	Solid	Solid	Print	Solid	Print	Solid	Color	Solid
BSWR-T16	-	-	-	-	-	-	\$16 ⁹⁵	\$18 ⁹⁵	\$15 ⁹⁵	\$28 ⁹⁵	-	-	-
BSWR-T15	-	-	-	-	-	-	\$18 ⁹⁵	\$23 ⁹⁵	\$18 ⁹⁵	\$18 ⁹⁵	-	-	-
BSWR-T12	\$16 ⁹⁵	\$16 ⁹⁵	-	-	\$23 ⁹⁵	\$14 ⁹⁵	-	-	-	-	-	-	-
BSWR-T03	\$29 ⁹⁵	-	-	-	-	\$21 ⁹⁵	-	-	-	-	-	-	-
BSWR-B18	-	-	-	-	-	-	-	-	-	-	\$14 ⁹⁵	\$17 ⁹⁵	\$33 ⁹⁵
BSWR-B03	-	-	\$22 ⁹⁵	\$25 ⁹⁵	-	\$19 ⁹⁵	-	-	-	-	-	-	-
BSWR-B02	-	-	\$31 ⁹⁵	\$35 ⁹⁵	-	\$24 ⁹⁵	-	-	-	-	-	-	-
BSWR-B01	-	-	\$20 ⁹⁵	\$23 ⁹⁵	-	\$17 ⁹⁵	-	-	-	-	-	-	-
BSWR-D14	-	-	-	-	-	-	\$20 ⁹⁵	\$29 ⁹⁵	\$22 ⁹⁵	\$27 ⁹⁵	-	-	-
BSWR-D13	-	-	-	-	-	-	\$28 ⁹⁵	\$31 ⁹⁵	\$23 ⁹⁵	\$29 ⁹⁵	-	-	-
BSWR-D09	-	-	-	-	-	-	-	-	-	-	\$24 ⁹⁵	\$26 ⁹⁵	-
BSWR-D06	-	-	-	-	-	-	\$25 ⁹⁵	-	\$23 ⁹⁵	-	-	-	-

*T = Top, *B = Bottom, *D = Dress. Print prices for natural fabric are in Bali Swim prints only.



Starter Kits

We've helped hundreds of labels successfully launch their brands from scratch. Our Starter Kits are a compilation of useful tools for you to kick start your journey.

[View Starter Kits](#)



Fabrics

We offer a small range of quality natural fabrics at low MOQs. These fabrics are made organically and some are hypoallergenic. We also offer other man-made fabric that are light, breathable with a really nice flow, these polyester fabrics are great for digital printing. You can find more info about our fabric on our website. We recommend that you pay us a visit frequently to stay up to date with everything that we have to offer.

See latest fabric range and colors [here](#)

Prints

**Endless print options.
Always using Eco Ink.**

We do all our prints in house.
All of our prints are made using
ecological inks ([ECO PASSPORT
certified by OEKO-TEX®](#)).

Print Strikes

For all prints, we offer a mock-up & print-strike service, where we send you a digital mockup for proportion (size) approval, and then we make a 30×30cm trial-print swatch to send you. From there, you can personally verify the quality of the print itself, and if there's something you aren't satisfied with, we'll revise it!

For fabric prints, the digital print file (artwork) must be high-resolution (300dpi+) to print well. It can be a vector, JPG, PNG, TIFF, or any other format - as long as the file is high-res.

Seamless

Artwork should be seamless or set up for repeat, which simply means that you can put copies of the print next to it in each direction so that it matches up without any interruption in the pattern. If it's not repeatable initially, you can sometimes mirror the image four ways, and thus create the same effect. We can assist you in ensuring that your print is able to be repeated and replicated in a clear pattern.

Scale

Lastly, the scale of your print is key. For example, you have an artwork/pattern of a starfish - what's the height of each starfish? The difference between a small cute 3cm starfish and large 15cm starfish will make a difference on your end-result.

Print Options

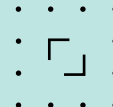
*includes worldwide license



Your own print



Our Pinterest [selection](#)*

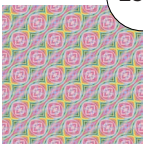


[Shutterstock](#)*

Seamless Prints



Artwork to be repeated and scaled



Scale A



Scale B



30 x 30 cm
Strike Off



Send to customer
for approval



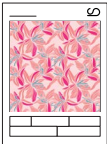
Artwork to be repeated and scaled



Scale A



Scale B



30 x 30 cm
Strike Off



Send to customer
for approval



Artwork to be repeated and scaled



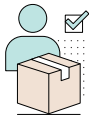
Scale A



Scale B



30 x 30 cm
Strike Off



Send to customer
for approval



Shipping

We usually send all products with DHL or similar level courier. From our experience it's the most reliable way to send products: both samples and bulk production to ensure safe and quick delivery to our customers.

We want to see your products arrive whole, and in time.

Sample Shipment

Lead Time

4-5 business days worldwide.

Cost

US\$50-150 per shipment depending on how many samples in the box and where you are located.

Bulk Shipment

Lead Time

4-5 business days worldwide + custom clearing (1-3 days usually).

Cost per 120-250 pcs (depending on style)

Australia: ~US\$150

USA: ~US\$190

Europe: ~US\$220

These numbers are based on our last months shipments to a variety of destinations and sizes. Exact prices will be settled when we ship.

Customs (Duty)

For both samples and bulk shipments, we plan all deliveries to minimize on custom duties.

On your end, you need to do receiving and custom clearance yourself – but we provide with the documentation that you might need from our side.

Frequently Asked Questions

I'm new to fashion business and want to run my own. Do you have any tips?

Grab our [Starter Kit](#)! With that in hand, you'll have everything you need to get going.

Is your production ethical? Sustainable?

At the heart of Bali Swim is our constant endeavor to improve the lives of people and the state of our planet. Read more [here](#).

What is your MOQ for samples?

We don't require a MOQ – our goal is to make your ordering process easy and convenient. Get your ready design samples (and bulk) on shop.baliswim.com now!

What is your MOQ for manual bulk re-orders?

200pcs – if you re-order the same styles within 6 months, you won't be subjected to a surcharge.

What are your payment terms for manual orders?

50% deposit and 50% before delivery. You can submit your payments with PayPal (links to CC also) or through a bank transfer.

For new clients, we require a 100% deposit up front for your first order. This only applies once to your first order with us. With PayPal, you have Buyer Protection.



How long does it take to produce an order (lead times)?

Orders on shop.baliswim.com:

- Samples: 3 days (in stock fabrics)
- Bulk: 6 weeks (in stock fabrics)

Samples: 1-3 weeks* (Ready Design)

Samples: 4-8 weeks* (Custom Design)

Bulk production 6-8 weeks*

Shipping: 4-5 business days worldwide (DHL)

Full cycle (start to finish)

- 1-3 months* (Ready Design)
- 3-6 months* (Custom Design)

When using imported fabrics, you should add 3-4 weeks onto the timeline to allow shipping time depending on the type of fabric.

*Current conditions apply to all lead times including fabric availability, current load, holidays and other variables.

Lead times will be confirmed by sales to you directly at order times.

What other collections do you make?

We have expanded our range of collection through the years. See our catalog at baliswim.com

What kind of products or design elements do you not yet work with?

As we grow as a company, we have built a network of reliable and trustworthy suppliers. We also have a sourcing service where we can find the right product for you. See our service [here](#).

How are my designs kept safe?

In our Terms & Conditions, we have a segment about Confidentiality (NDA), which protects your Intellectual Property (IP), such as information about you, your business, and your designs. You can read our full T&C [here](#) to understand just how we keep your designs safe.

Is bulk production a must if I sample with you?

No! When you order with us, there is absolutely no obligation to complete a bulk order after producing a sample. You also own your patterns that we develop for you.

What file format for CAD do you work with?

DXF and DGS.

What are your Terms & Conditions?

Please read our T&C by clicking [here](#).

Who are your clients?

Aligned with our T&Cs, we do not disclose names, designs, or any information regarding our clients. But on our [homepage](#) and our [Google Maps](#), we have a few reviews from our clients who chose to share their experience working with us. We value privacy and integrity.

We manufacture for labels worldwide, a majority of which are in North America, Australia, and Europe.

We've helped a number of our clients launch their new swimwear lines and they've grown with us over the years. We've also worked with established brands who were seeking a new manufacturing partner.

Can we visit you in Bali?

Of course! Our 2000 sqm superfactory hosts all of our operation for you to visit and see. We have private showrooms where you can meet your rep or merchandiser in comfort for an in-depth design and manufacturing discussion and do fitting of your samples. We are located in west Denpasar on a major road for easy and quick access from any location in Bali. To visit our factory please make an appointment first, [here](#).



**We donate 10 cents
per article of
resort wear**

**to clean up
our oceans**

Read more about our ethical and
sustainable methods [here](#).



baliswim.com
info@baliswim.com
[+62 813-3888-8585](tel:+6281338888585)

BaliSwim

